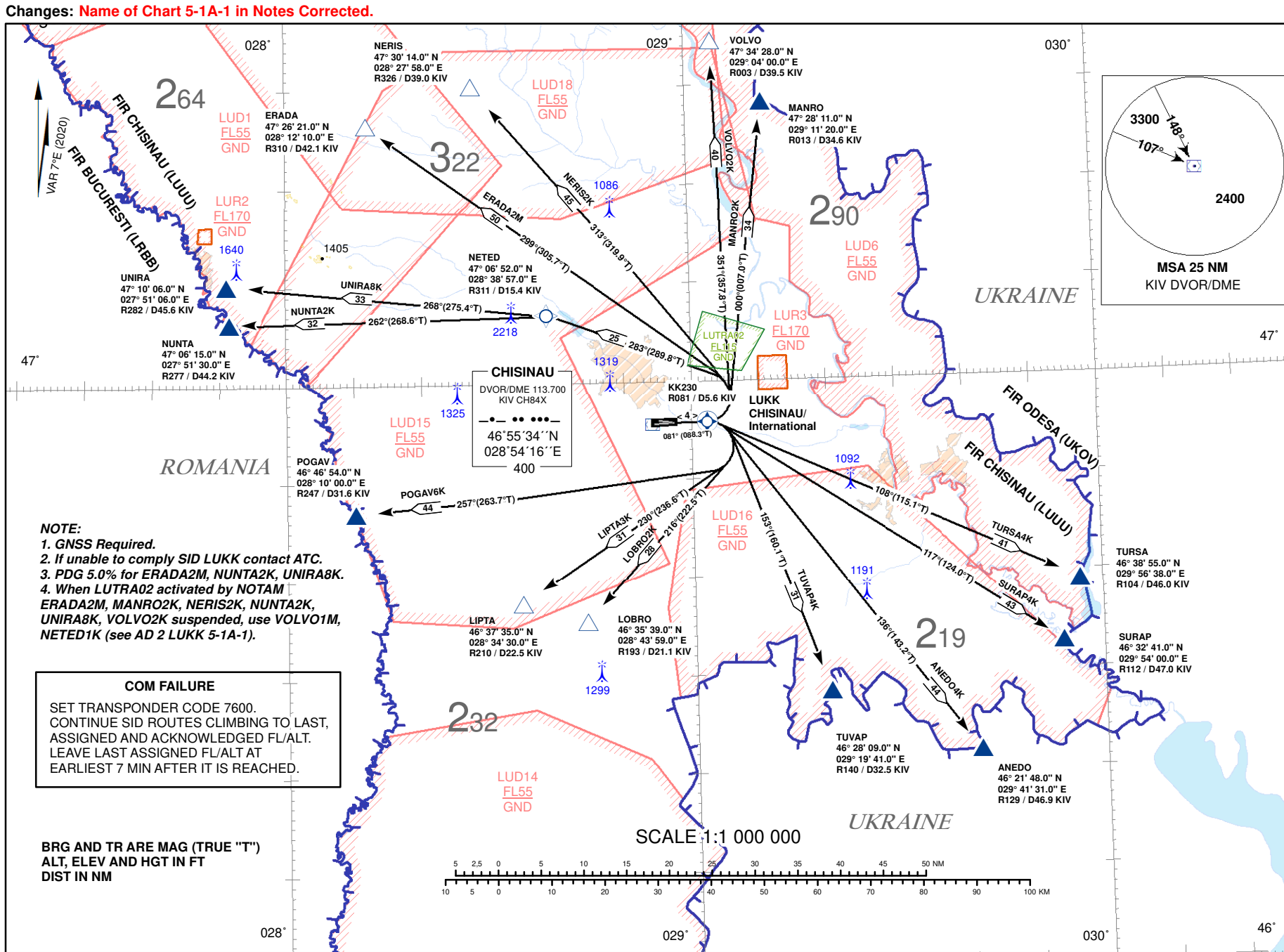


TRANSITION  
ALTITUDE 4000FT

**CHISINAU/Intl (LUKK)**  
**RWY 08**  
ANEDO4K, EERAD2M, LIPTA3K, LOBRO2K,  
MAMRO2K, NERIS2K, NUNTA2K, POGAY6K,  
SURAP4K, TURSA4K, TUVAP4K, UNIRA8K,  
VOLVO2K



AIRAC AMDT 004/2021

**RNAV(GNSS), VOR/DME OVERLAY  
STANDARD INSTRUMENT  
DEPARTURE (SID) - ICAO**
**CHISINAU/Intl (LUKK)  
RWY 08**
**Procedure Coding Table**

Path Terminator	Waypoint			Course/Track MAG (True)	Dist NM	Turn Direction	Constraints		Navigation Specification	Remarks
	Identifier	Flyover	Coordinates				Level	Speed (kt IAS)		
ANEDO4K										
CF	KK230	Yes	465547.9N 0290222.5E	081 (088.3)	3.5	-	-	-	RNAV 1	Turn at KK230 is calculated with bank 20° and speed 240kt IAS
DF	ANEDO	No	462148.0N 0294131.0E	136 (143.2)	43.7	R	+FL90	-		
ERADA2M										
CF	KK230	Yes	465547.9N 0290222.5E	081 (088.3)	3.5	-	-	-	RNAV 1	Turn at KK230 is calculated with bank 20° and speed 240kt IAS
DF	ERADA	No	472621.0N 0281210.0E	299 (305.7)	50.4	L	+FL80	-		
LIPTA3K										
CF	KK230	Yes	465547.9N 0290222.5E	081 (088.3)	3.5	-	-	-	RNAV 1	Turn at KK230 is calculated with bank 20° and speed 240kt IAS
DF	LIPTA	No	463735.0N 0283430.0E	230 (236.6)	31.3	R	+FL80	-		
LOBRO2K										
CF	KK230	Yes	465547.9N 0290222.5E	081 (088.3)	3.5	-	-	-	RNAV 1	Turn at KK230 is calculated with bank 20° and speed 240kt IAS
DF	LOBRO	No	463539.0N 0284359.0E	216 (222.5)	27.6	R	+FL80	-		
MANRO2K										
CF	KK230	Yes	465547.9N 0290222.5E	081 (088.3)	3.5	-	-	-	RNAV 1	Turn at KK230 is calculated with bank 20° and speed 240kt IAS
DF	MANRO	No	472811.0N 0291120.0E	000 (007.0)	34.0	L	+FL90	-		
NERIS2K										
CF	KK230	Yes	465547.9N 0290222.5E	081 (088.3)	3.5	-	-	-	RNAV 1	Turn at KK230 is calculated with bank 20° and speed 240kt IAS
DF	NERIS	No	473014.0N 0282758.0E	313 (319.9)	45.2	L	+FL80	-		
NUNTA2K										
CF	KK230	Yes	465547.9N 0290222.5E	081 (088.3)	3.5	-	-	-	RNAV 1	Turn at KK230 is calculated with bank 20° and speed 240kt IAS
DF	NETED	No	470652.0N 0283857.0E	283 (289.8)	24.5	L	-	-		
TF	NUNTA	No	470615.0N 0275130.0E	262 (268.6)	32.4	-	+FL80	-		
POGAV6K										
CF	KK230	Yes	465547.9N 0290222.5E	081 (088.3)	3.5	-	-	-	RNAV 1	Turn at KK230 is calculated with bank 20° and speed 240kt IAS
DF	POGAV	No	464654.0N 0281000.0E	257 (263.7)	44.3	R	+FL80	-		
SURAP4K										
CF	KK230	Yes	465547.9N 0290222.5E	081 (088.3)	3.5	-	-	-	RNAV 1	Turn at KK230 is calculated with bank 20° and speed 240kt IAS
DF	SURAP	No	463241.0N 0295400.0E	117 (124.0)	42.5	R	+FL90	-		
TURSA4K										
CF	KK230	Yes	465547.9N 0290222.5E	081 (088.3)	3.5	-	-	-	RNAV 1	Turn at KK230 is calculated with bank 20° and speed 240kt IAS
DF	TURSA	No	463855.0N 0295638.0E	108 (115.1)	41.0	R	+FL90	-		
TUVAP4K										
CF	KK230	Yes	465547.9N 0290222.5E	081 (088.3)	3.5	-	-	-	RNAV 1	Turn at KK230 is calculated with bank 20° and speed 240kt IAS
DF	TUVAP	No	462809.0N 0291941.0E	153 (160.1)	30.8	R	+FL90	-		
UNIRA8K										
CF	KK230	Yes	465547.9N 0290222.5E	081 (088.3)	3.5	-	-	-	RNAV 1	Turn at KK230 is calculated with bank 20° and speed 240kt IAS
DF	NETED	No	470652.0N 0283857.0E	283 (289.8)	24.5	L	-	-		
TF	UNIRA	No	471006.0N 0275106.0E	268 (275.4)	32.8	-	+FL80	-		
VOLVO2K										
CF	KK230	Yes	465547.9N 0290222.5E	081 (088.3)	3.5	-	-	-	RNAV 1	Turn at KK230 is calculated with bank 20° and speed 240kt IAS
DF	VOLVO	No	473428.0N 0290400.0E	351 (357.8)	40.1	L	+FL90	-		